

# Training Document – Product Setup with Components



In this lesson you will learn about using the Accredo system.

After completing this lesson you will be able to:

- Create a Product
- Add Components to Products
- Update Costs and Prices
- Learn about different types of components

# Contents

Training Document – Product Setup with Components .....	1
Product Setup with Components.....	3
Creating a Product .....	3
Adding Components to Products .....	4
Costs and Pricing .....	5
Per Product Pricing.....	5
Batch Price Update.....	6
Types of Components .....	7
Manufacturing a Product with Components .....	8
Contact.....	9

# Product Setup with Components

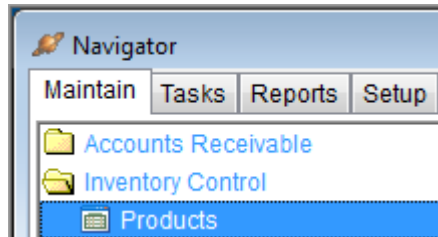
This section will cover the creation of products, adding parts onto a product template and product pricing.


## Creating a Product

First you need to create the product that will be manufactured.

- **Go to**

**Maintain > Inventory Control > Products**

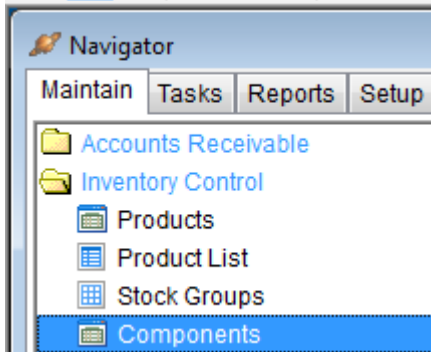


- **Click Insert** 
- **Enter the appropriate information**
  - Product Code
  - Product Name
  - Stock Group
  - Sales Group
  - Unit
  - Etc.
  - **Note:** Non Diminishing should not be ticked
- **Save**

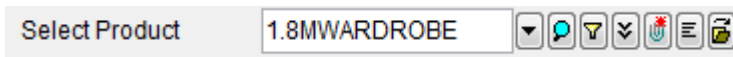
# Adding Components to Products

Next you need to define what existing products are used in the manufacture of the Product.

- Go to  
**Maintain > Inventory Control > Components**

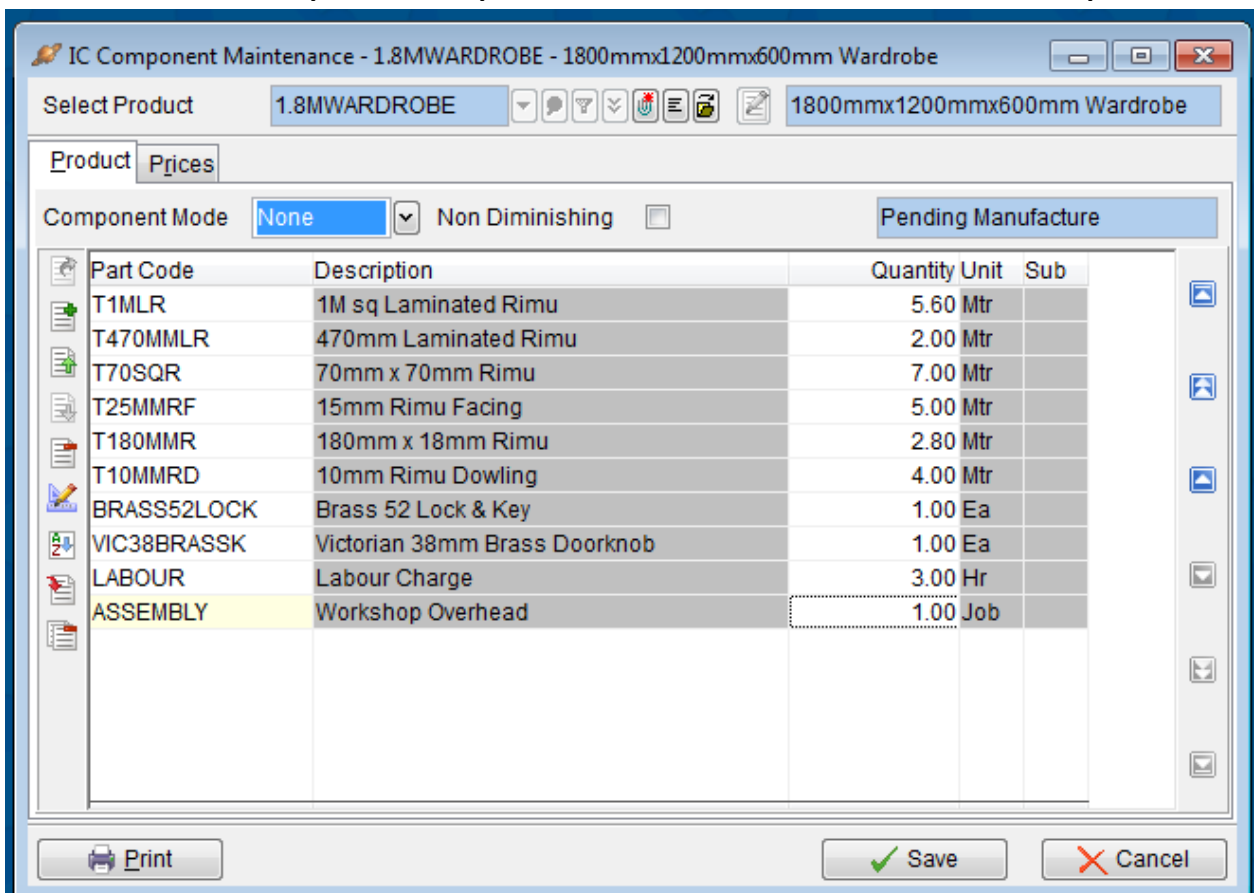


- Find the entered Product Code



- Click Edit 

- Enter in the Parts and quantities required to make ONE unit of the manufactured product



- Save

# Costs and Pricing

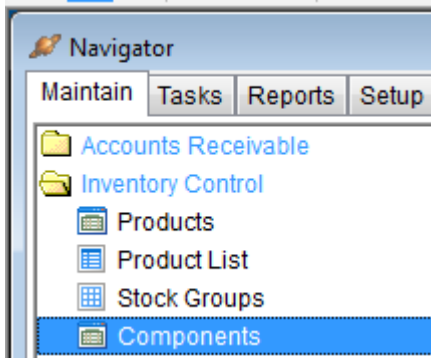
The Product costs & selling prices for a manufactured item can be updated individually or as a batch process.

## Per Product Pricing

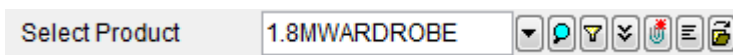
- In the same form as entering components

Go to

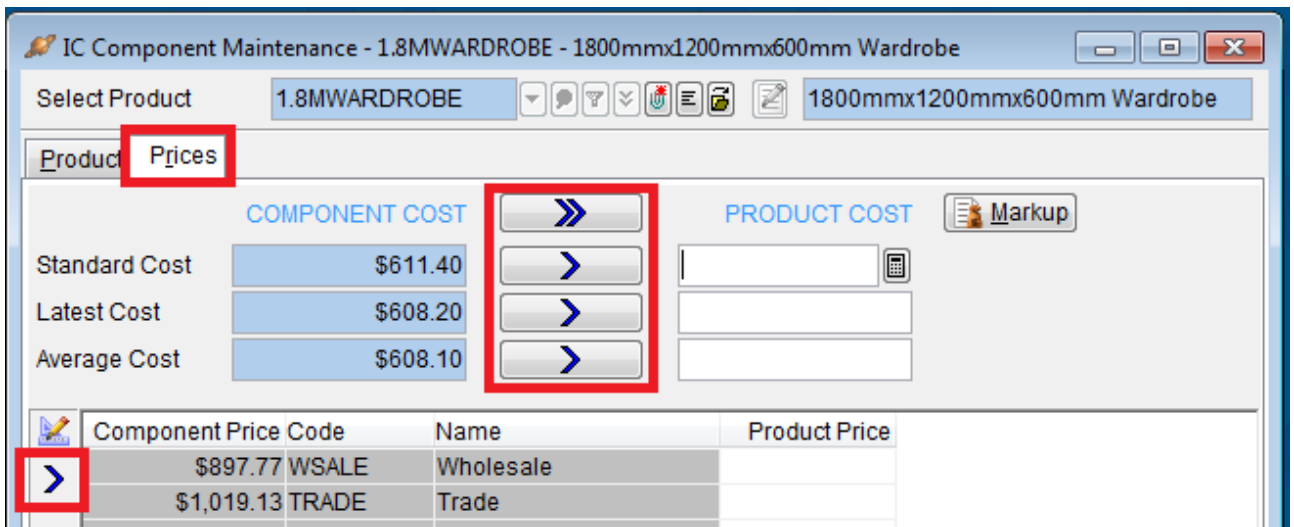
Maintain > Inventory Control > Components



- Find the entered Product Code



- Click on the Prices Tab.
- Using the blue buttons you can update the pricing of the components.



- The top section details product costs; the bottom product selling prices.
- Save

### Batch Price Update.

This function updates Cost and or Sell Prices from the components of a product. This also takes into account products that have sub components.

- **Go to**  
**Tasks > Inventory Control > Update Prices > Reprice from Components**
- **Select appropriate option.**

IC Reprice from Components

Product - From

Product - To

Stock Group

Creditor

Update Type: Query Run

Cost Prices To Update:  
 Standard Cost  
 Latest Cost  
 Average Cost

Markup Basis: Latest

Sell Prices

Action	Code	Currency	Markup Price	Rnd Directn	Rnd Unit
None	WSALE	NZD		Nearest	\$0.00
None	TRADE	NZD		Nearest	\$0.00
None	RETAIL	NZD		Nearest	\$0.00
None	RETAUD	AUD		Up	\$0.10
None	RETGBP	GBP		Up	£0.100000
None	JAPAN	JPY		Up	¥1

Include Inactive

Run

# Types of Components

Component Mode	Non Diminishing	Parts Loaded	Product Type	Product Type Description
Automatic	Clear (No)	Yes	Auto Manufacture	When the product is a component in a Manufacture, it will be automatically manufactured.
Manual	Clear (No)	Yes	Manual Manufacture	When the product is a component in a Manufacture, it will not be automatically manufactured.
Automatic	Selected (Yes)	Yes	Auto Kitset	Auto Kitsets list all components of the kitset on invoices, and use values from the components.
Manual	Selected (Yes)	Yes	Manual Kitset	Manual Kitsets have a specified price. You can select whether to show or hide usages (components) on Invoices.

Kitsets are non-diminishing products. They assist with invoice entry e.g. a special price for a group of products to be sold as one kitset.

They are a quick way to get a list of products onto an invoice e.g. Harvey Norman – buying a bed suite you get a bed, side tables, chest of drawers etc. Whether it is auto or manual effects how the invoice looks. One will list all of the products (Auto Kitset) the other will just say bed suite (Manual)

Manufactured products are actual Products

Car = manufactured Product - May be made of many sub components e.g. 4 doors, 4 wheels

Using Auto – a door will be manufactured and all the subcomponents that make up a door will be used directly out of stock

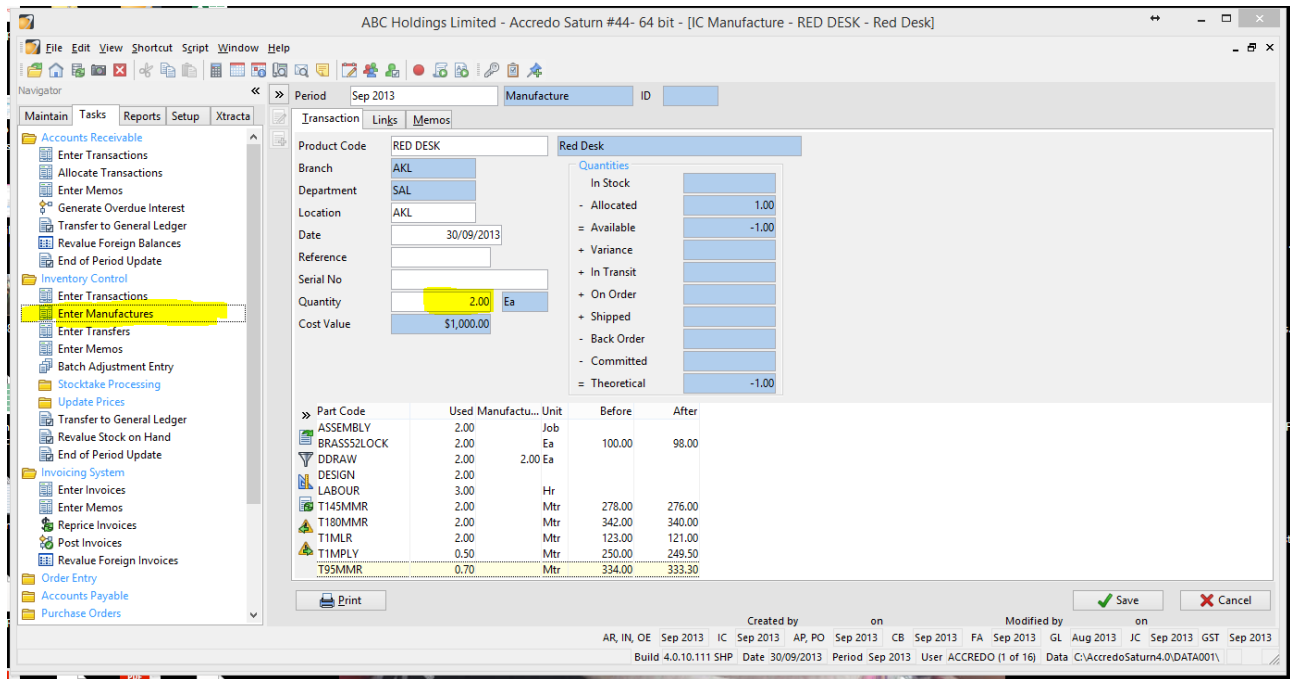
Using Manual – a wheel comes straight out of stock - off the shelf - needs to be manufactured from subcomponents manually

When you manufacture a car the system will run through all of the subcomponents and will manufacture anything marked as automatic but will only use manual components out of stock.

# Manufacturing a Product with Components

Once you have created your Product with its components you need to Manufacture the product to put completed items into stock and take components out of stock.

Go to: Tasks\_Inventory Control\_Enter Manufactures.



The components come out of stock at the time of manufacture and the finished product comes out of stock at the time an invoice to a customer is posted.



# Contact

For further information or for assistance with Accredo please do get in touch with us.

## *Offices*

### **New Zealand (+64)**

Tauranga..... 07 544 4488

Wellington..... 04 282 1534

Email ..... [Helpdesk@ZealSystems.co.nz](mailto:Helpdesk@ZealSystems.co.nz)

### **Australia (+61)**

Melbourne..... 03 9016 3410

Sydney..... 02 9098 0996

Brisbane..... 07 3088 4989

Email ..... [Helpdesk@ZealSystems.com.au](mailto:Helpdesk@ZealSystems.com.au)